

# INTEGRA>G



# Specifications

## integraSOLID > G (CB\_INTGR-G)

The integraSOLID > G series sink module with Multiconsole > A is an all-in-one solution that incorporates all necessary commercial bathroom services into one unit that is easy to install and aesthetically superior to other sink units. The Multiconsole > A features a prefabricated unit with dryer, soap dispenser and faucet included in one housing that is easy to install and even easier to remove (secured with a tamper-proof fastener) and maintain. The minimal 3/8" thick shelf dispenses air, soap and water without additional fixtures to clutter the sink area. The LED back-lit mirror has LED indicators to show where the dryer, soap dispenser and faucet are below the shelf.

## VALUE-ADDED BENEFITS

- Non-porous materials maintain hygienic environments
- Single, double and triple positions available
- Minimal look with blade-like shelf containing sink services
- System durability and long-term Integrity
- Turnkey project services
- Steel carriers available for self-supported installation
- ADA-compliant and accessibility-sensitive products

### APPLICATIONS

Commercial shower enclosures and bathrooms in airports, offices, entertainment venues, sports clubs/facilities, gyms/spas, administrative buildings, hospitality.

### CONFIGURATIONS

Single, double and triple basins available as standard. More positions as single unit available upon request.

### FUNCTION

All-in-one sink basin, mirror and services (dryer, soap dispenser and faucet).

### MATERIAL

Solid Surface Material

### MULTICONSOLE > A DIMENSIONS

Exposed Thickness: 1/2"  
 Width: 2' - 2-5/16"  
 Height: 7-1/4"  
 Shelf Depth: 4-3/4"

### SINK BASIN DIMENSIONS

Depth: 1' - 5-13/16"  
 Thickness @ front: 2-3/8"  
 Single Position Width: 27-9/16"  
 Double Position Width: 55-1/8"  
 Triple Position Width: 82-11/16"

### MIRROR DIMENSIONS

Depth from finish wall:  
 Single Position Width: 27-9/16"  
 Double Position Width: 55-1/8"  
 Triple Position Width: 82-11/16"  
 Height: 37-7/16"

*\*Custom sizes available*

*\*\*Custom LED indicators available*

### SINK BASIN MOUNTING

Floor-mounted steel carriers are available upon request to make the integraSOLID > G free-standing and self supported without the need to mount to substrate reinforcement.

### MULTICONSOLE > A MOUNTING

Steel housing of Multiconsole > A must be mounted to the rear side of the finished partition. Exposed portion of Multiconsole > A unit to be installed from front after finish wall installation is complete.

### MIRROR MOUNTING

CARVART supplies Z-Clips to be mounted to finish wall behind mirror. Client responsible for providing adequate blocking to support full mirror weight after installed on Z-Clips.

### SOAP OPTIONS

Standard soap refill options is tamper-proof cap at front of Multiconsole>A.

*\*\*Optional remote basin with 1.3 - 6.6 gal capacity*

### UL LISTING

Certificate Number: 20171117-E493638  
 Report Ref.: E493638-20170929  
 Issue Date: 2017-November-17

Issued to: SOEMA srl  
 36 Via Paolo Soprani  
 62019 Recanati MC Italy

Certified Parts: Plumbing Accessories  
 Commercial Hand-washing and  
 drying unit/electronic multi-function  
 hand washing unit

Model No.: Multiconsole A

Standard for safety: UL 1951 Electronic Plumbing  
 Accessories CAN/CSA-C22.2 No. 68-09  
 Motor-Operated Appliances (Household and Commercial)  
 CSA C22.2 No. 14-13 Industrial Control

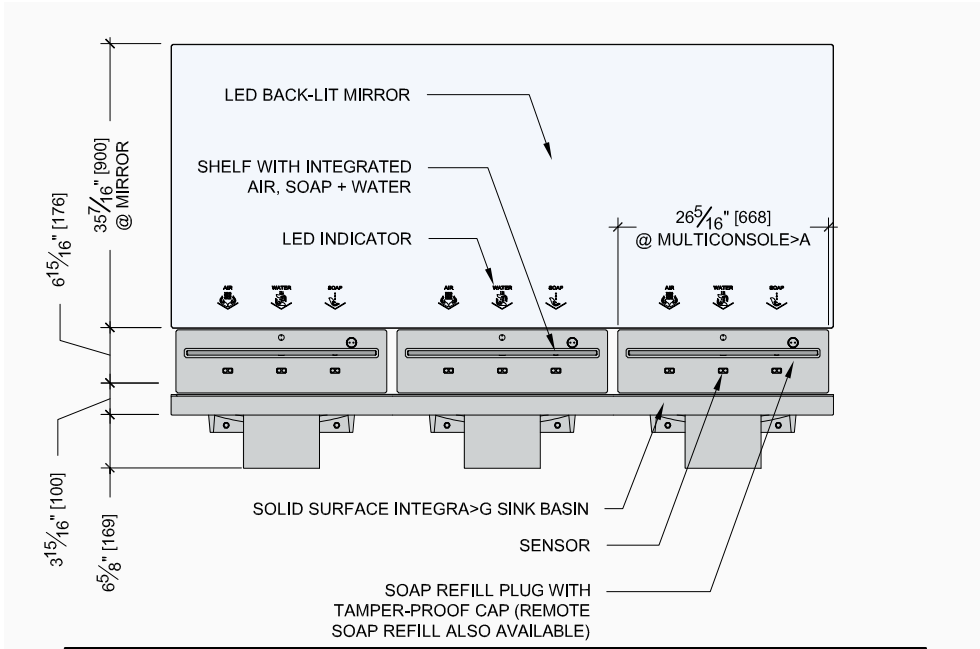
### HARDWARE WARRANTY

1-year limited warranty.

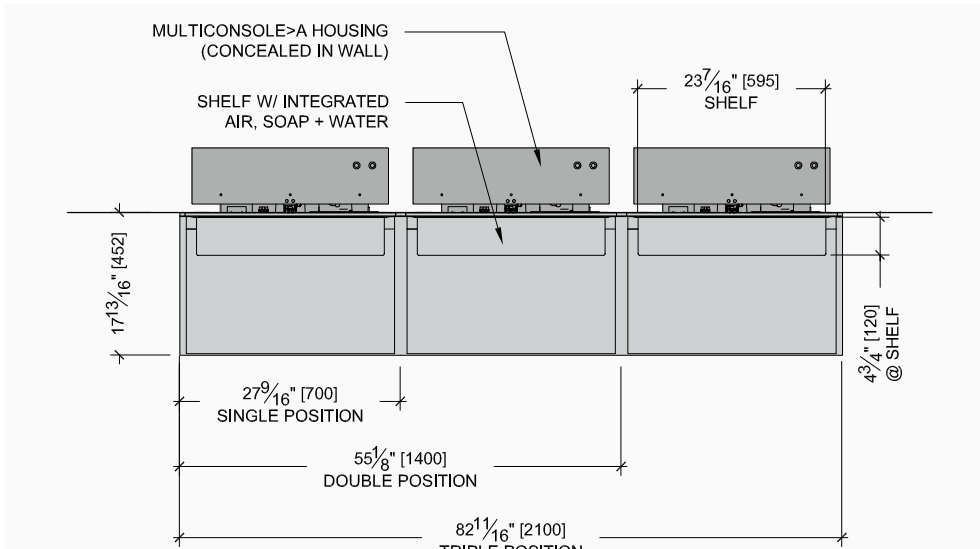
For more info, contact CARVART  
 Sales Advisory Team at [quotes@carvart.com](mailto:quotes@carvart.com)  
 or call us at 212 675 0030.



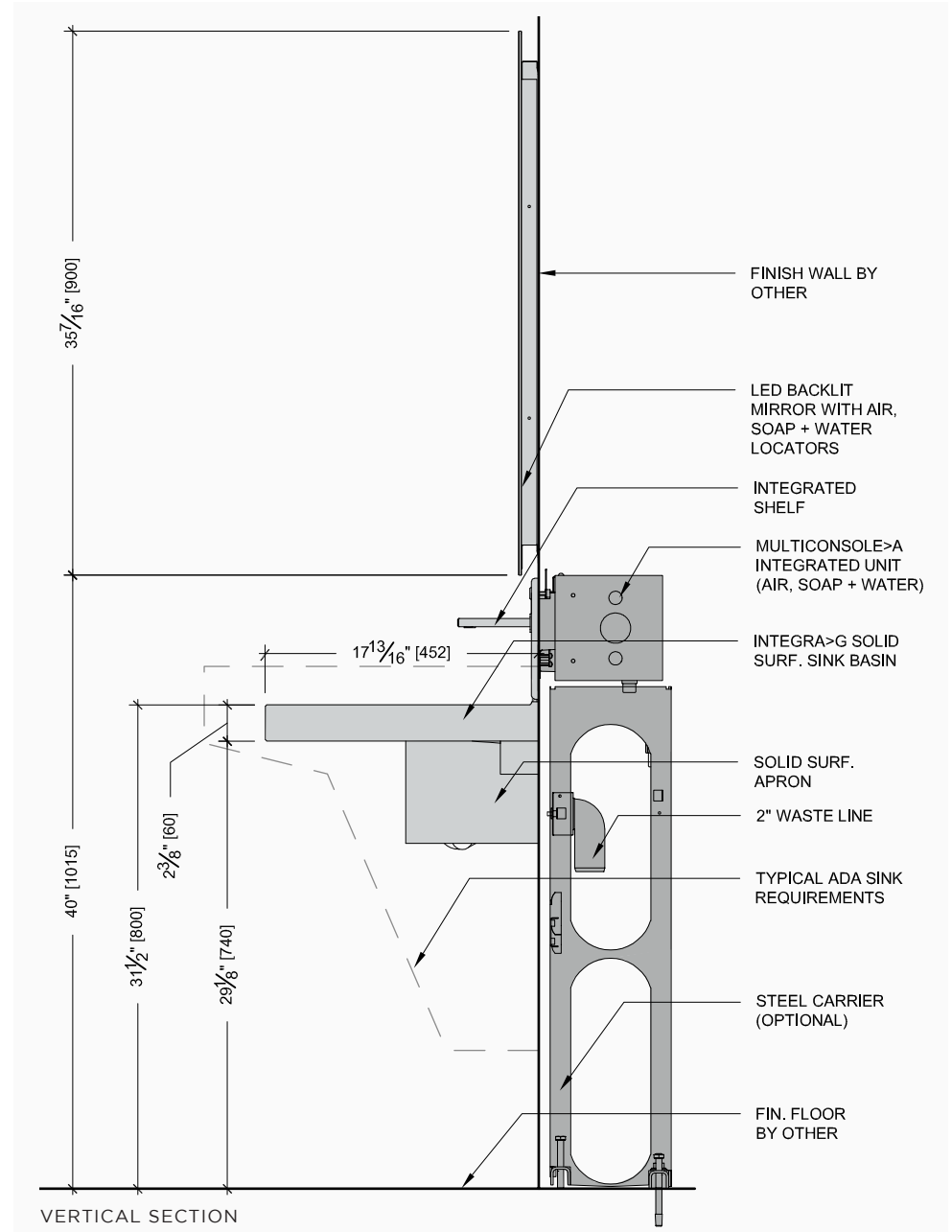
# integraSOLID>G



ELEVATION



PLAN



VERTICAL SECTION

# FIXTURE OPTIONS

## GLASS FACE PLATE



## POLISHED METAL FACE PLATE



## DECK MOUNTED FIXTURES



CARVART®

BY

**SOEMA®**

*Handcrafted  Technology*