



**CARVART's movable wall products, glassSTACKWALL and glassFOLDWALL, (both available in Framed and Frameless) are unique space-dividing solutions designed to custom fit into an opening and operate easily for years to come. All CARVART movable wall products are engineered to install smoothly and efficiently. Each solution is custom dimensioned for each project opening and comes with a wide variety of design options to enable architects to configure the final design to a client's exact needs and specifications.**

**Both Framed and Frameless designs have minimized frame detailing that can be combined with thousands of different CARVART glass possibilities, resulting in a tailored appearance in your space, privacy flexibility, acoustical barriers and high-quality performance. This translates into an overall design success that maximizes the visual connection between two adjoining areas.**

# Specifications

**glassFOLDWALL > Framed**

Folding framed walls are easy-to-operate privacy options where glass panels are connected via hinges that move the entire series as they are pulled along the top track. Glass panels are fully-framed which provide the highest acoustical isolation. The track of top-hung system can be concealed in the ceiling. Vertical profiles are available at the walls to further improve acoustic isolation.

**VALUE-ADDED BENEFITS**

- Efficient hardware make system easy to operate
- Easy to install with self-correcting components
- Wide-range of acoustic and privacy options at all seam and panel connections
- Minimal look with thin, aluminum profiles
- Pre-engineered top structure support solution for taller spaces above finish ceiling (additional cost)
- System durability and long-term integrity
- Turnkey integrated project services

**APPLICATIONS**

Space division between offices, conference rooms or flex-space.

**CONFIGURATIONS**

Straight runs, corner applications, custom angles and fixed panels for wide openings.

**FUNCTION**

Adjoining doors move in unison when pulled.

**GLASS TYPES**

Refer to CARVART's Glass Collection

**GLASS THICKNESS —**

Refer to local code and structural requirements  
Accommodates 3/8" nominal up to 13/16" nominal.

**HARDWARE DIMENSIONS**

**Aluminum top track:** 2-3/4" wide x 3" high nominal.  
**Top/Bottom finish rails:** 1-3/4" deep x 4-7/16" high.  
**Vertical side rails:** 5/8" individually or double 1-11/16" deep x 1-5/8" high.

**HARDWARE MATERIALS/FINISHES —**

Refer to Finish Chart

**WIDTHS — OVERALL MINIMUM/  
MAXIMUM RANGE (inches):**

**Glass panels:** minimum 18". Maximum 37".  
**Maximum run lengths (operable or fixed panels):**  
Unlimited.

**HEIGHTS — OVERALL MINIMUM/  
MAXIMUM RANGE (inches):**

**Glass panels:** minimum 18" height;  
maximum 120" height above finished floors.

**MOUNTING FASTENERS**

Final anchoring decision is client-directed or based on client structural consultant. Mounting fasteners and anchors to be supplied by others. CARVART advisory available.

**WEIGHT & STRUCTURAL LOADS —  
Consult local engineer for structural codes  
and requirements**

Top rails for individual panels rated up to 220 lbs. Linear per foot weights based on final glass type. Overall weights available upon request for client structural calculations. Refer to CARVART for technical consultation.

**ADD-ON DESIGN OPTIONS —**

*Per specification and upcharges apply*  
Various pull options.  
Corner extrusion.  
Various plastic/brush connection details for increased privacy.  
Top-structure available on request and for additional cost.  
Lockable/Non-locking floor latch bolts available.

**CUSTOMIZATION**

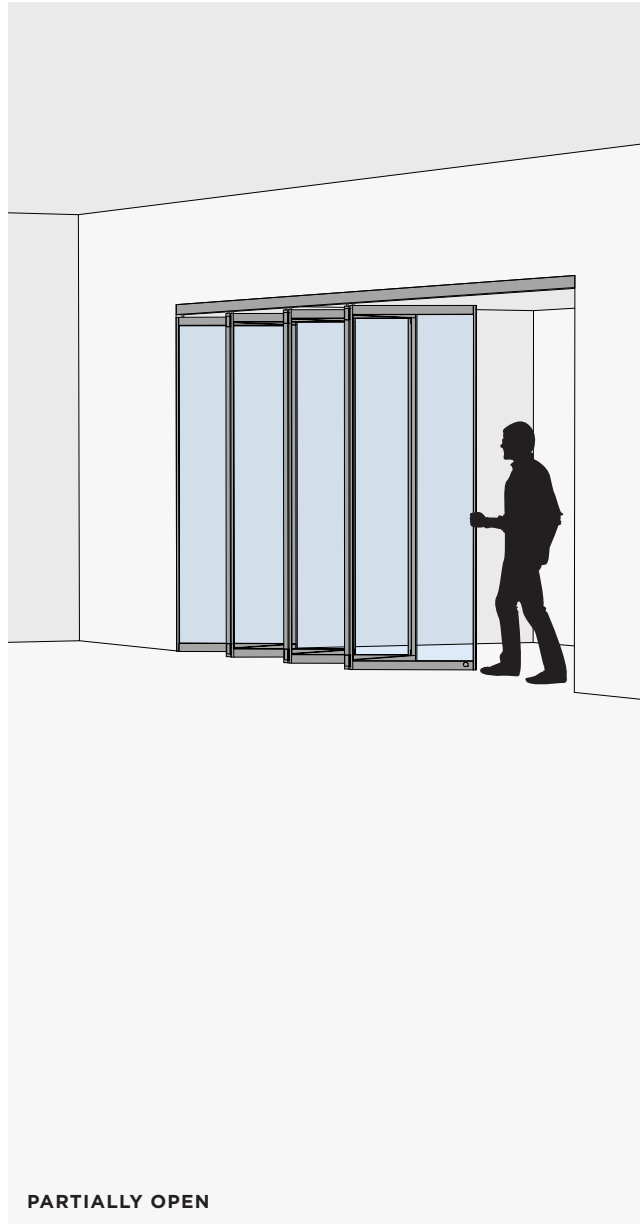
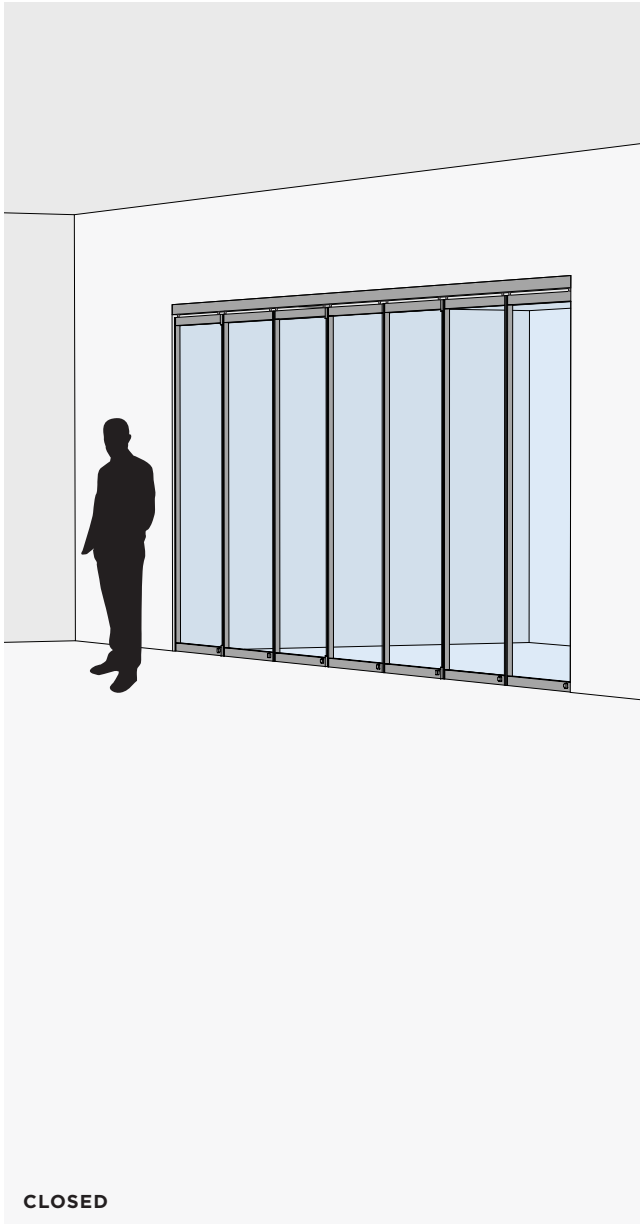
Custom dimensions per opening.

**INSTALLATION**

Self-correcting rollers easily slot into top track. Pre-cut top track speeds up install. Top-track includes seam connectors for improved alignment. Requires trained and competent glazing or carpenter industry professionals. Installation instructions, assistance and training available at time of order. All hardware components, including doors, will be delivered knocked down and require assembly by a glazing industry professional. Certain glass and hardware finishes are available as pre-assembled products as called out in the glass and hardware finishes pages. Consult a CARVART agent for information on available pre-assembled components.

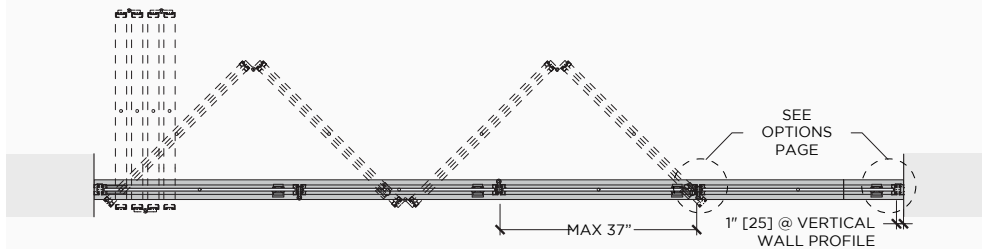
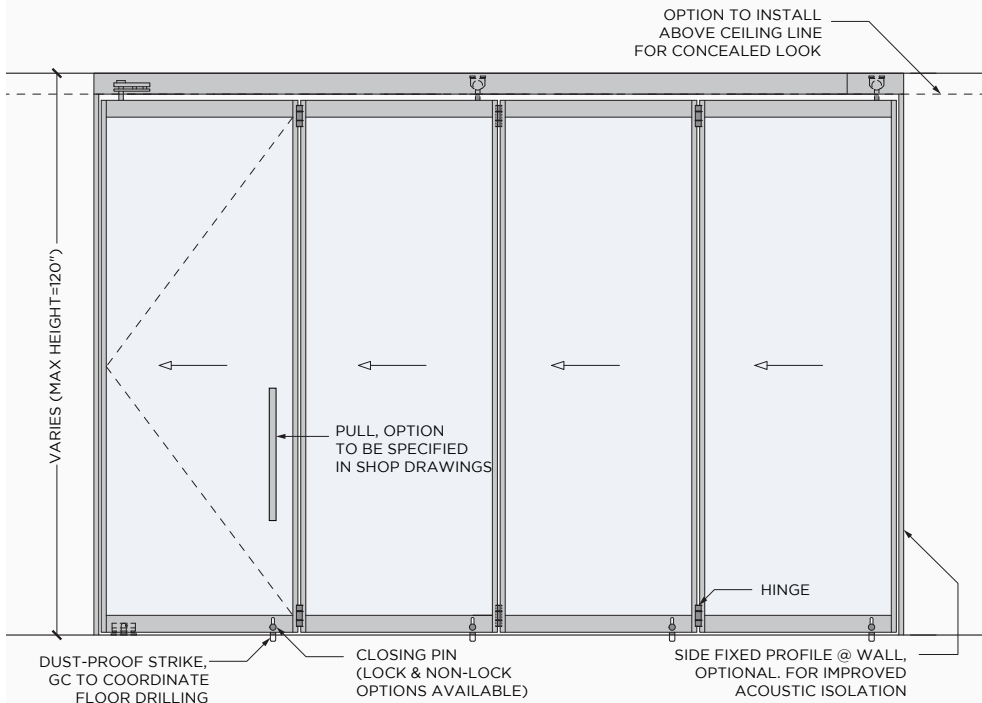
For more info, contact CARVART Sales Advisory Team at [quotes@carvart.com](mailto:quotes@carvart.com) or call us at 212 675 0030.

# Functionality

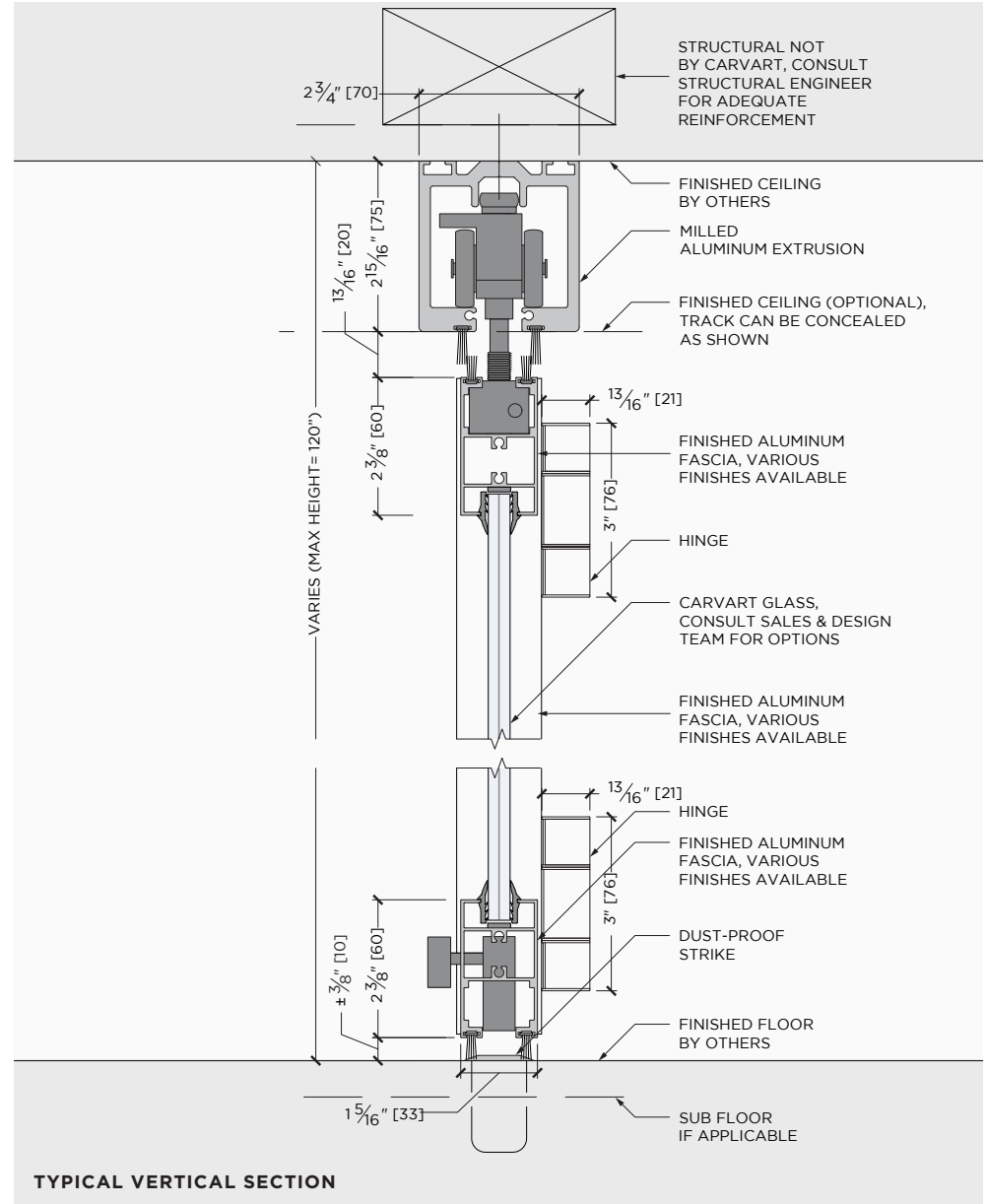


# Details

TYPICAL FRONT ELEVATION

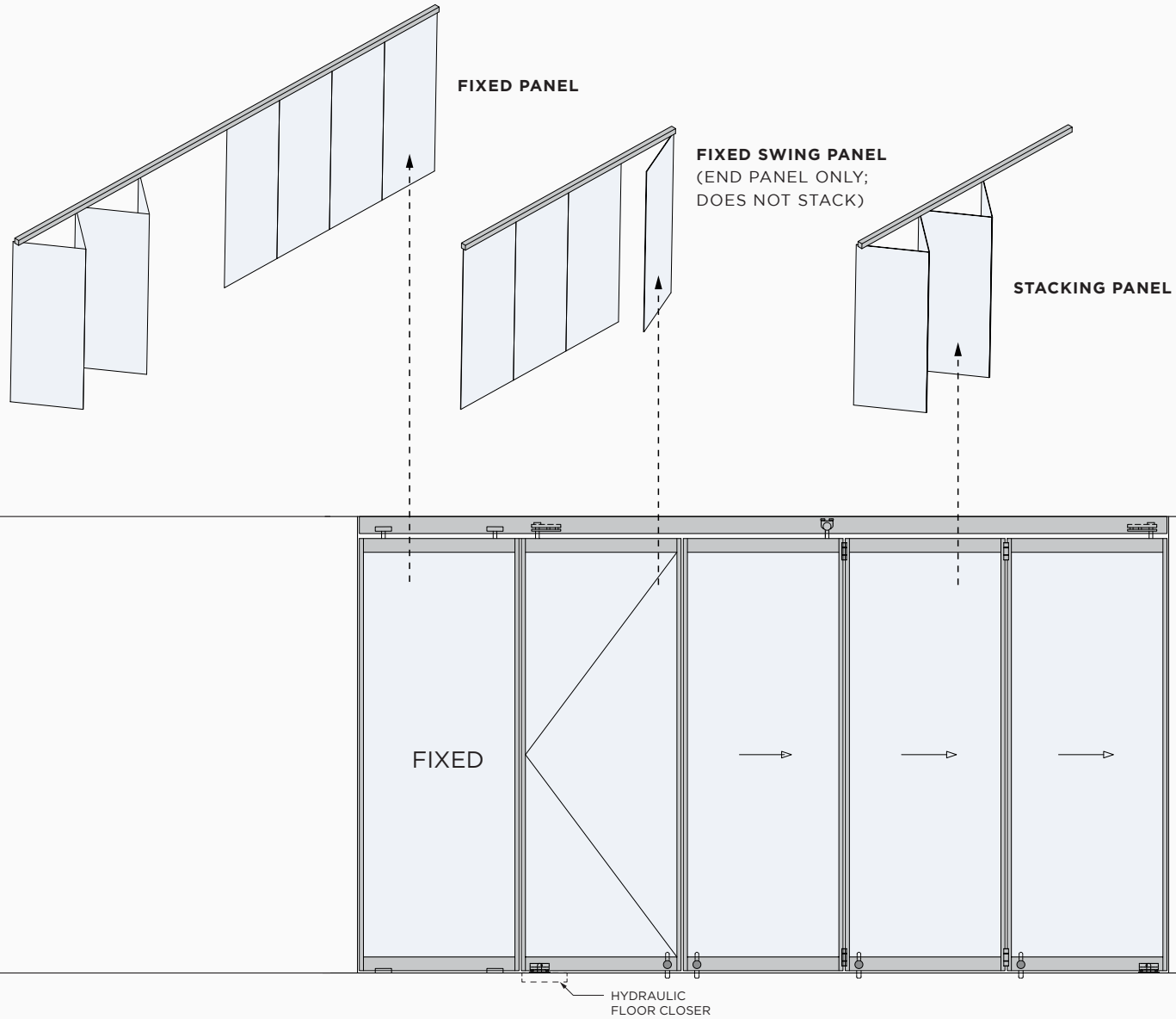


TYPICAL HORIZONTAL SECTION



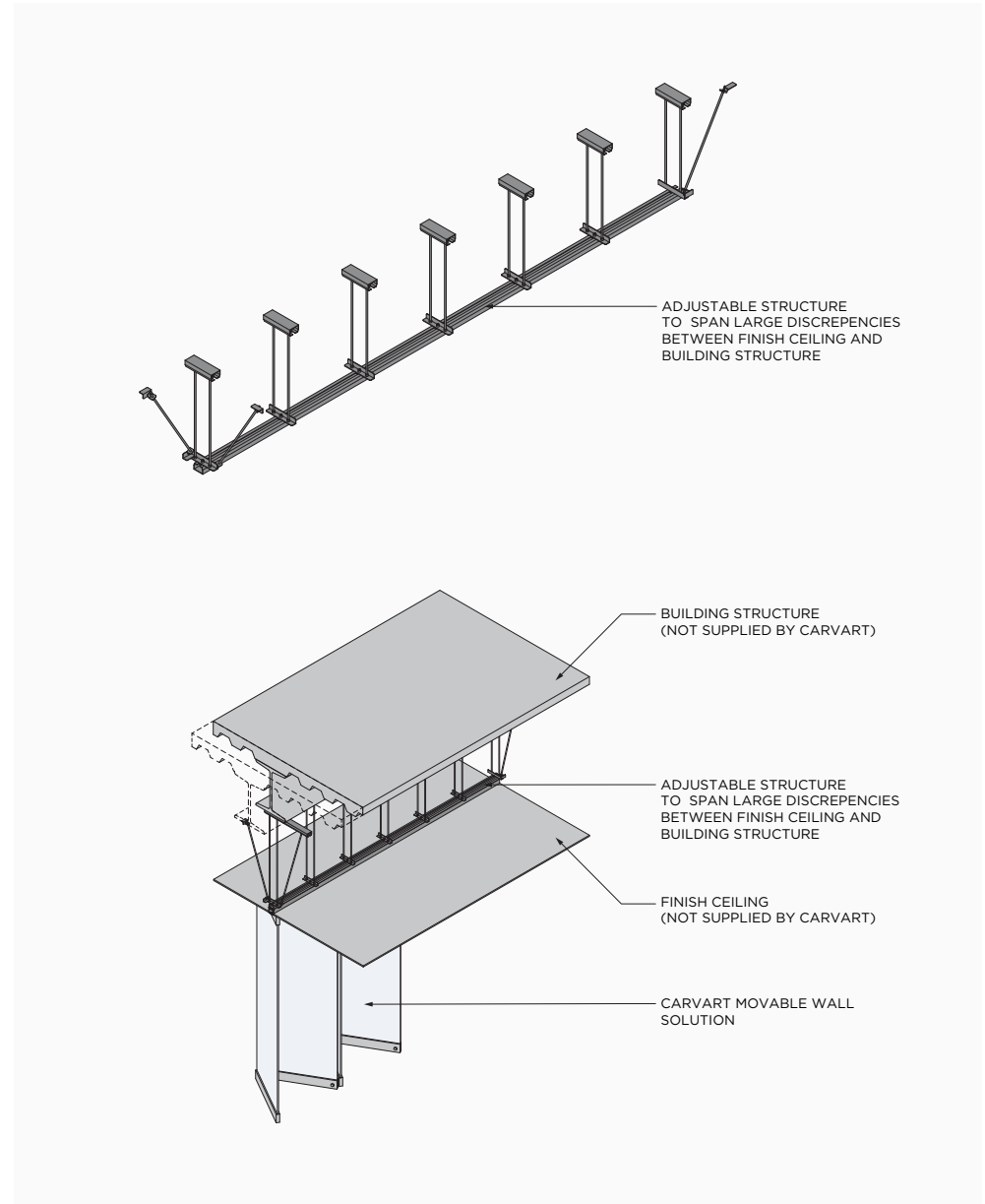
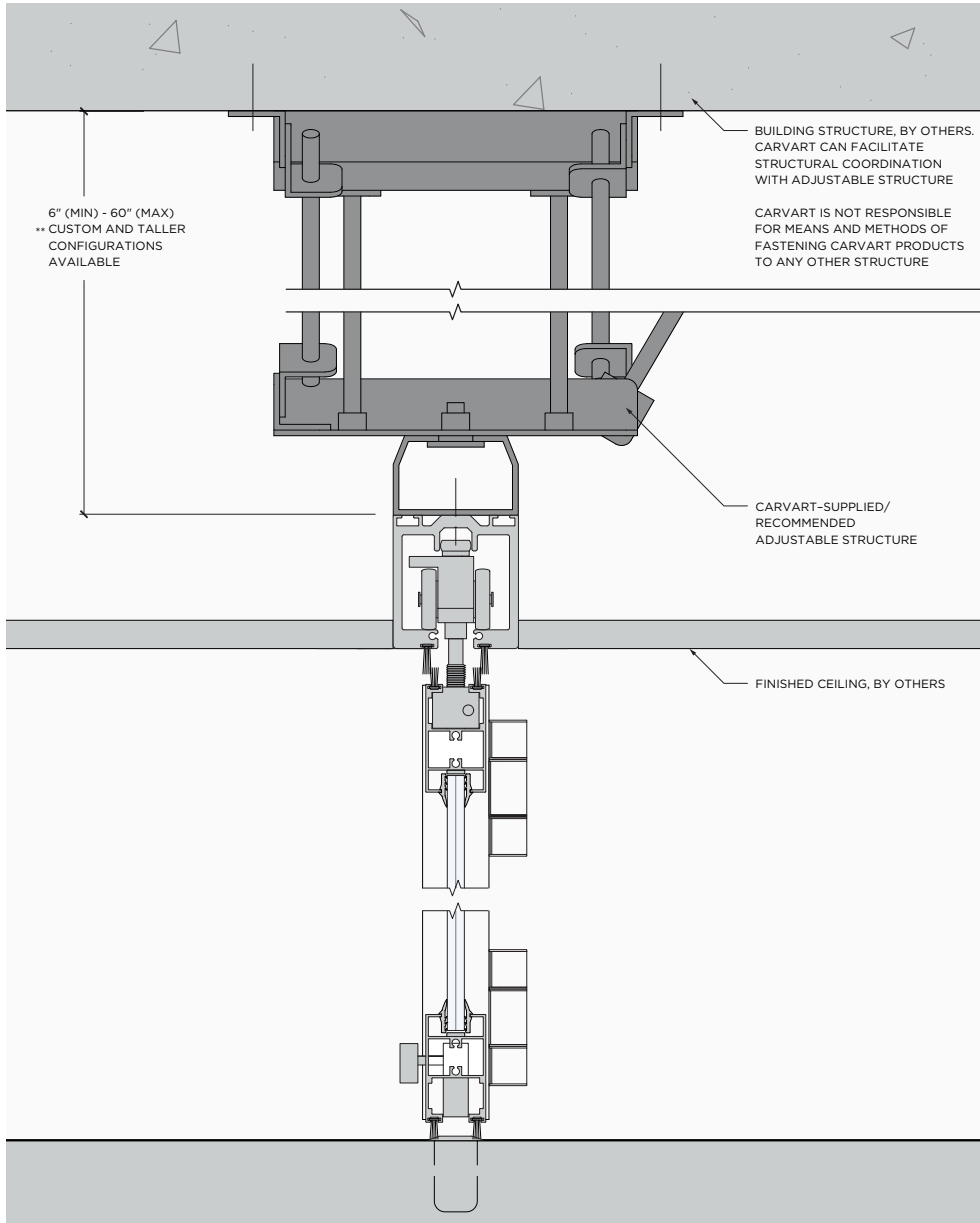
TYPICAL VERTICAL SECTION

# Options: Panel types



## Options: Structural support (above glassWALL systems)

- Pre-engineered, easy-to-install top support can be coordinated and provided for additional cost.
- Ideal for tall spaces where super-structure is far above finish ceiling.

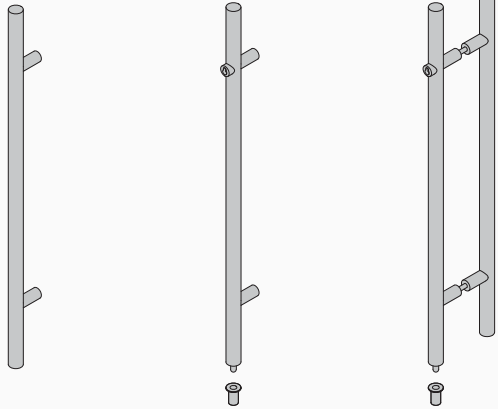


# Options: Pulls and Closers

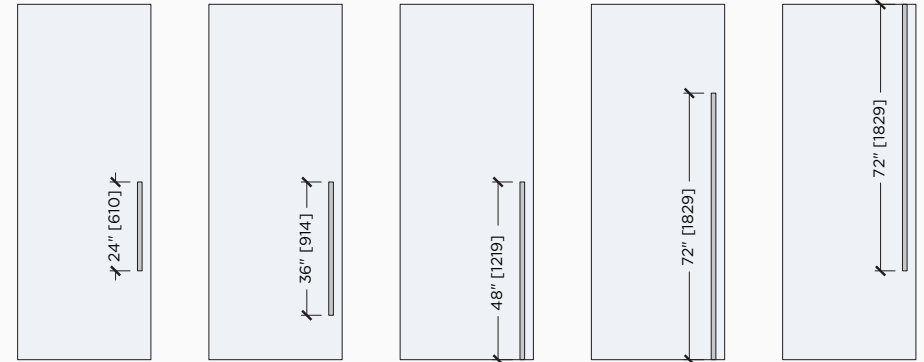
**Ladder pulls available in:**

- Multiple finishes (see chart)
- ADA configurations
- Locking/non-locking

**LADDER PULLS**

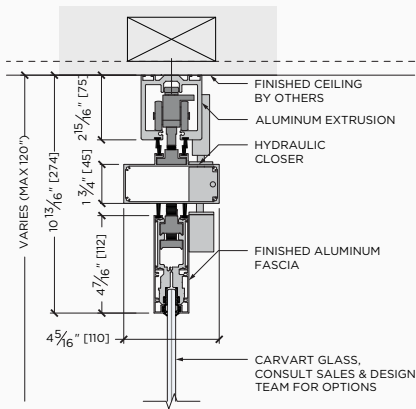


SINGLE-SIDED NON-LOCKING      SINGLE-SIDED LOCKING      BACK-TO-BACK LOCKING

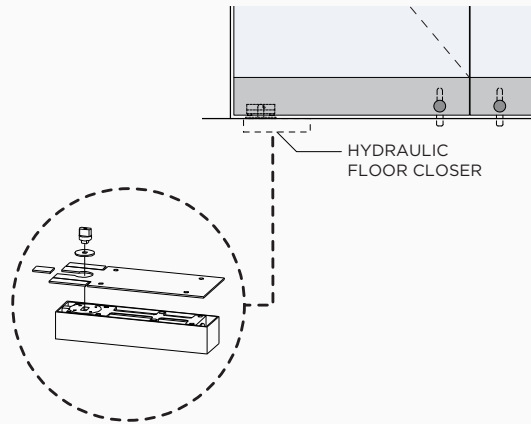


**24"** NON-LOCKING      **36"** NON-LOCKING      **48"** LOCKING OR NON-LOCKING      **72"** LOCKING OR NON-LOCKING      **72"** CEILING CONFIGURATION

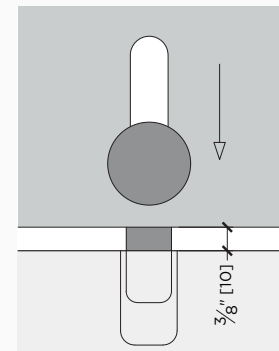
**CLOSERS**



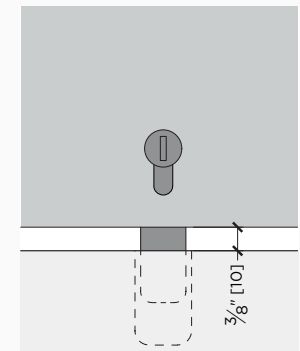
**HYDRAULIC DOOR HEADER**  
@ MID-RUN PANEL DOOR



**HYDRAULIC FLOOR CLOSER**  
@ FIXED SWING PANELS



**TYPICAL FLOOR BOLT**

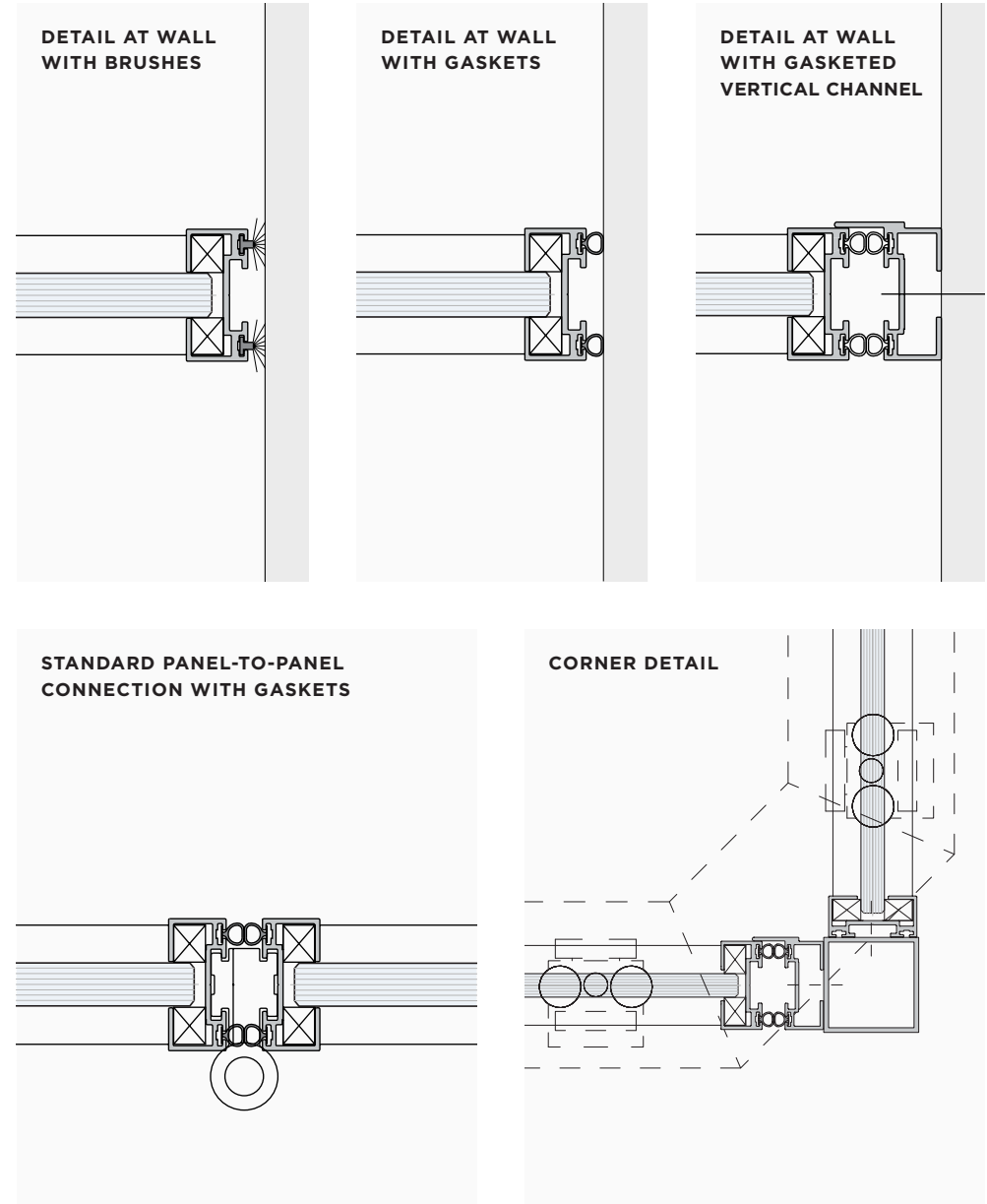
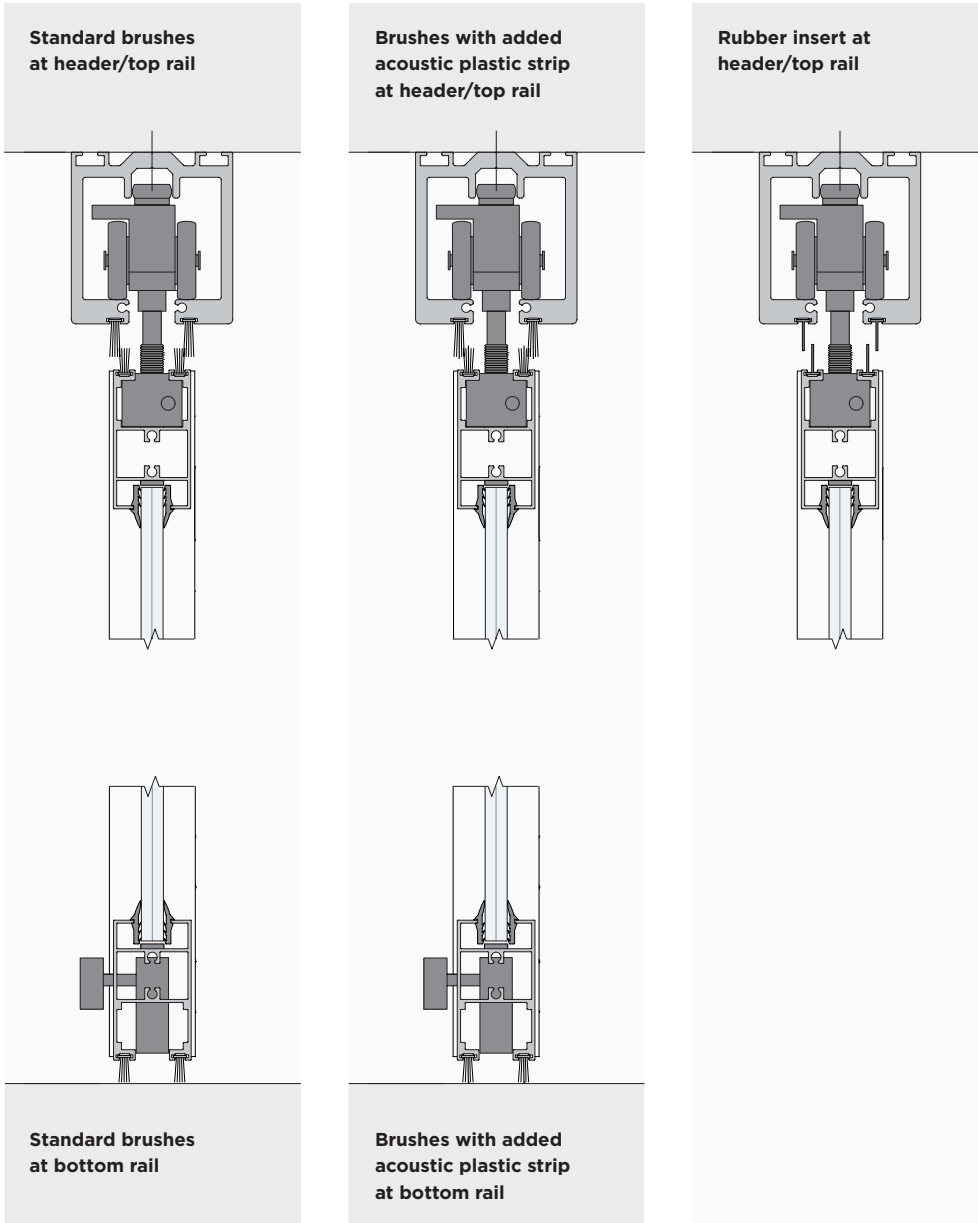


**TYPICAL LOCKING BOLT**



# Options: Connections

Depending on the desired level of acoustic privacy, CARVART offers a range of seals and connection options.



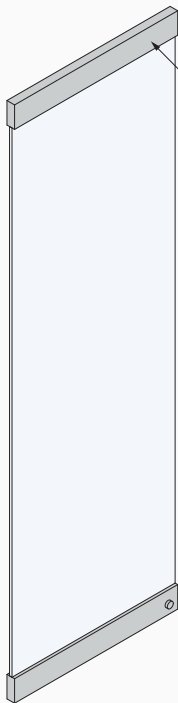
## Design appeal and detailing

- All finish profiles and hardware are specifically engineered to keep sight-lines and design aesthetic minimal
- Aluminum fascia's conceal all clamping and hardware, available in various finishes
- Lightweight and optimized hardware solutions keep system efficient and easy to operate
- Create unique appearance with CARVART glass options

MINIMAL TOP AND  
BOTTOM PROFILES  
1-1/4" (D) X 2-3/8" (H)



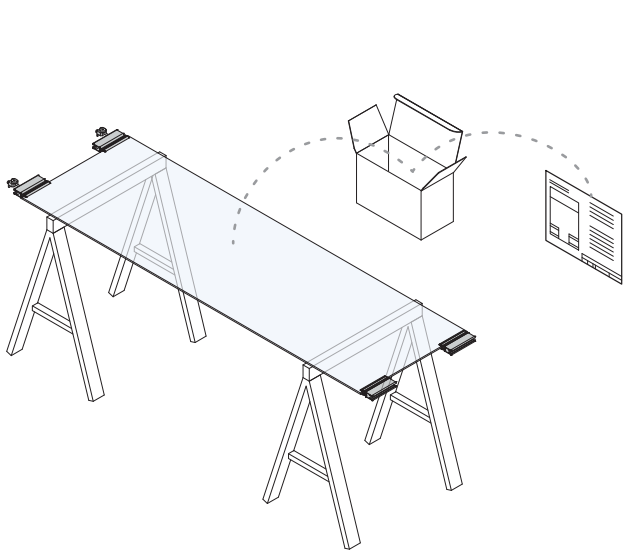
MINIMAL EXPOSED TOP  
AND BOTTOM RAIL  
1-9/16" (D) X 4-7/16" (H)



MINIMAL EXPOSED  
SIDE PROFILES  
11/16" (D) X 1-1/4" (H)



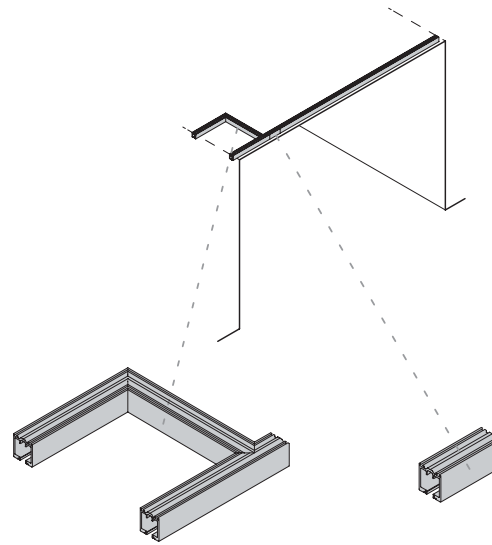
## Ease of Installation



### SIMPLE PANEL ASSEMBLY

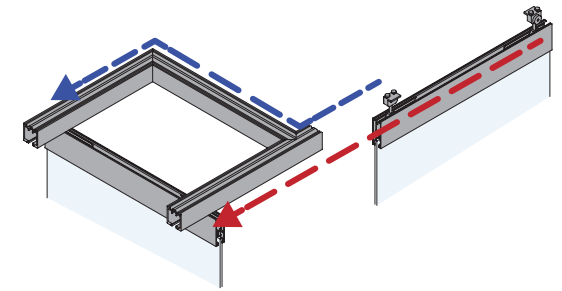
All hardware components come individually packed per panel and come with individual panel assembly instructions that are labeled to match the shop drawings for easy set up and assembly.

### PRE-ASSEMBLED



### COMPONENTS

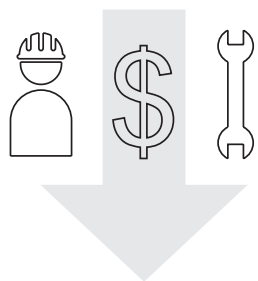
Easy-to-install top track: parking areas, removable maintenance piece and lengths of top track come pre-cut and assembled making it easy and fast to install.



### SELF-GUIDED HARDWARE

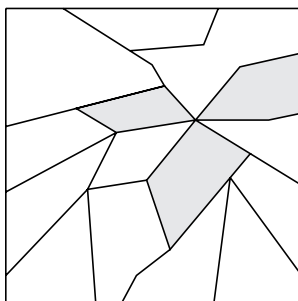
All hardware is self-guided to prevent any incorrect installation or operation.

# Life cycle maintenance



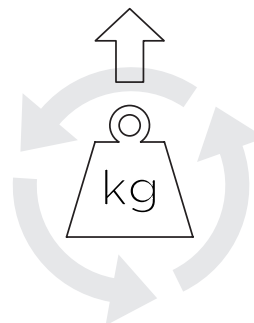
## LOW LABOR COST

Conventional systems have much higher labor costs due to complex installation methods. CARVART glassRAILING products are designed to be light-weight and ergonomic to facilitate easy installation.



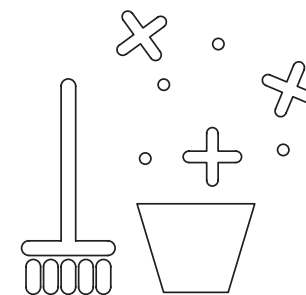
## EASY TO REPLACE

Intermediate panels are removable and replaceable due to dry-glazed system.



## DURABILITY AND HIGH CYCLE TESTING

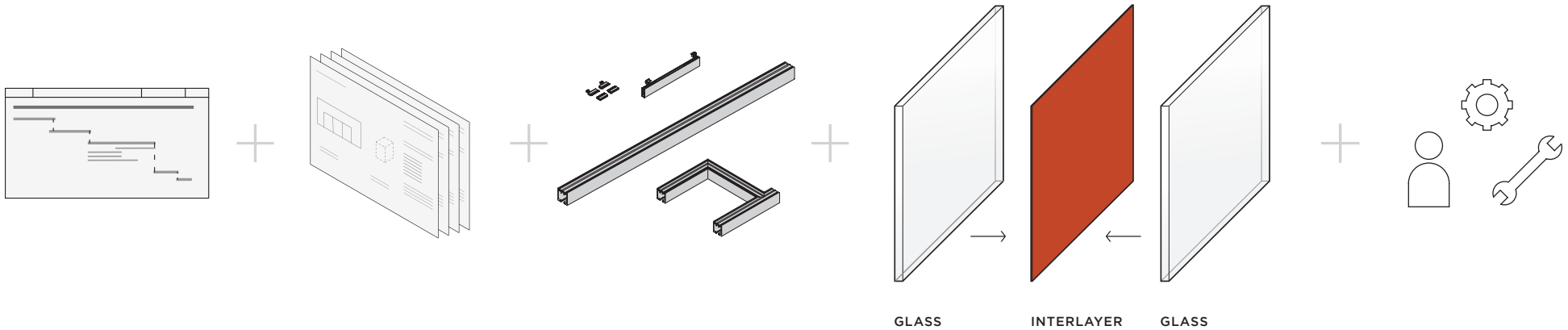
All CARVART movable walls are cycled-tested to hundreds of thousands of cycles and rated for weights far beyond the maximum panel size.



## CLEANING AND MAINTENANCE

Virtually no maintenance outside of cleaning once the system is in place and installed. Profiles have minimum reveals and crevices to collect dirt and grime.

# Project management coordination



## COORDINATION AND SHOP DRAWINGS

- CARVART offers full scheduling coordination and phasing for custom project delivery
- Full range of coordination and shop drawing/ engineering services
- Dedicated project managers are assigned to each project for maximum success

## HARDWARE OPTIONS

- Provide full range of hardware options for infinite design and site conditions
- Multiple design options

## GLASS DESIGN AND DEVELOPMENT

- Glass design and development services integrate standard and custom glass selections with available hardware options

## POST-DELIVERY SERVICES

- Installation training that is specific to project and product
- Project-specific service levels (including phased deliveries and shipping)
- Project logistics can ship by floor or designated area

# Overview

## CURATED HARDWARE FINISHES

CARVART's team and resources bring an innovative spirit and celebrates the creative process. Our strength is solving design challenges with sophisticated detailing, engineering and a cohesive blend of materials and hardware finishes across CARVART's minimalist interior and exterior architectural products and systems.

CARVART empowers the creative process by curating hardware system finishes from natural anodized aluminum with polish, satin, brushed, antiqued, blackened and other elegant techniques as well as the option to select any RAL color for powder coating.

## GUIDELINES

- Hardware finishes appropriate for each system may vary in color, type and other properties.
- Explore finish options below and consult with a CARVART team member for custom capabilities.

visit [carvart.com/materials](https://carvart.com/materials)

**Satin Anodized Aluminum**



**Brushed Satin Nickel**

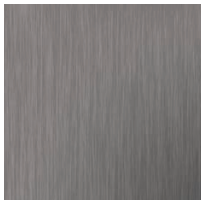


**RAL Powder Coat**



Select any RAL color

**Brushed Antique Nickel**



**Black Anodized Aluminum**



**Polished Aluminum**



**Blackened Aluminum**



# Overview

## CURATED MATERIALS

CARVART's team and resources bring an innovative spirit and celebrates the creative process. Our strength is solving design challenges with sophisticated detailing, engineering and a cohesive blend of materials across CARVART's minimalist interior and exterior architectural products and hardware systems.

CARVART empowers the creative process by curating an inspiring material offering of glass, stone, wood, cHPL, metals, meshes, textiles and more with patterns, textures, finishes and levels of transparency and reflectivity that allows creators to accurately envision their design.

## GUIDELINES

- Materials appropriate for each system vary in size, thickness, type, weight and other associated properties.
- Explore each material for inspiration at [carvart.com/materials](http://carvart.com/materials) and see full material palettes.
- Due to the various ways of creating with these materials, please consult a CARVART team member to ensure your material is best suited for a specific architectural product application.
- Materials can be integrated into CARVART's architectural system or available in sheets.

visit [carvart.com/materials](http://carvart.com/materials)

### GLASS



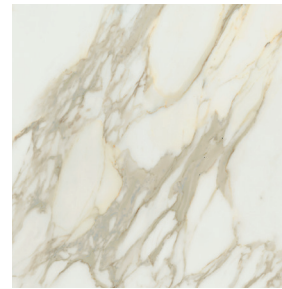
**Color**  
**Translucency & Reflectivity**  
**Interlayer**  
**Pattern & Texture**  
**CARVART Digital Experience**

### cHPL



**Color**  
**Woodgrain**  
**Rock**  
**Metal**  
**Polaris**

### STONE



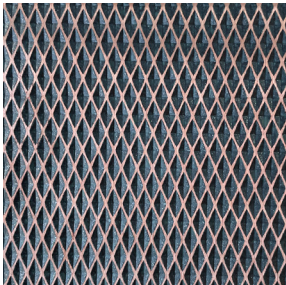
**Porcelain**

### WOOD



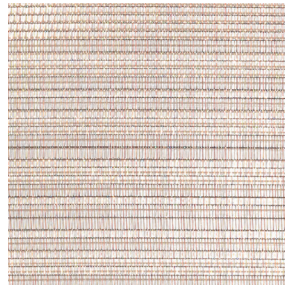
**Natural Veneer**  
**Reconstituted Veneer**  
**Perforation Patterns**

### METAL



**Copper**  
**Plated**  
**Powder Coated**

### MESH



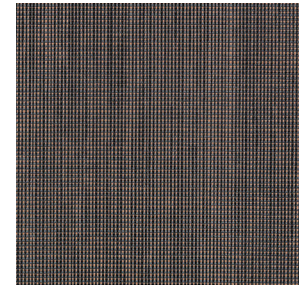
**Glass Interlayer**  
**Wire Mesh**

### TEXTILE



**Acoustical**  
**COM**

### WALL COVERING



**Acoustical**  
**COM**

CARVART®